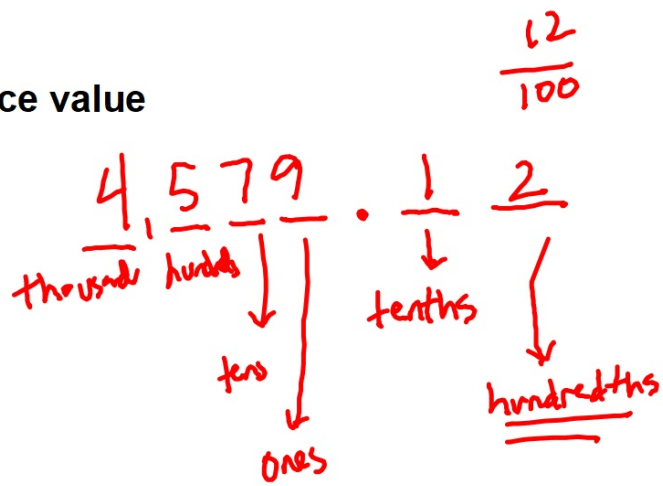


Representing a fraction with a denominator of 10 or 100 with a decimal

Connect

Place value



Connect



I do

Represent this amount of money using both a fraction and a decimal



I do Represent the following as a fraction or a decimal

Fractor	$2\frac{3}{10}$	$3\frac{62}{100}$	$4\frac{9}{100}$				
Decimal				6.2	7.47	8.01	9.80

We do

We do

Represent the following as a fraction or a decimal

Fractor	$8\frac{6}{10}$	$4\frac{91}{100}$	$2\frac{3}{100}$				
Decimal				5.4	3.57	9.02	7.90

You do together
on whiteboard

Fractor	$3\frac{77}{100}$	$3\frac{8}{100}$	$3\frac{2}{10}$				
Decimal				4.07	5.61	6.9	13.70

You do alone on
index card

Fraction		$3\frac{17}{100}$		$6\frac{4}{10}$	$7\frac{8}{100}$		
Decimal	2.6		4.91			4.06	4.80